

*Spring*  
LOOKBOOK



A



B



C



D



Roots has donated around \$3.1 million in cash and in-kind donations to organizations in the communities it operates in, since February 2020.

A: Perka® 15oz Recycled Coffee Grounds Stainless Coffee Mug, B: 5.5" x 8.5" Recycled Journal, C: RPET Whitewater Laptop Backpack, D: Roots73 Heavyweight Sherpa Fleece Lined Full Zip Hoodie



A



B



C



D



Corkcicle® helps bring clean and safe water to people and communities worldwide in rural areas without access through a partnership with charity : water.

A: iLive Indoor/Outdoor Bluetooth Solar Speakers, B: La Cuisine Acacia Wood Travel Picnic Table & Carrier, C: Extra Large Plaid Picnic Blanket, D: CORKCICLE® 12oz Buzz Cup

tentree plants trees to regenerate ecosystems and provide jobs in communities around the world. All their products are made in fair, safe working conditions, using only the comfiest, most earth-friendly materials available.



THRIVE Sustainable Merch  
A, B, C

THRIVE Sustainable Merch  
D

THRIVE Sustainable Merch  
E

THRIVE Sustainable Merch  
F

THRIVE Sustainable Merch  
A

B

THRIVE Sustainable Merch  
C

Skullcandy® partners with Protect Our Winters, a nonprofit dedicated to helping people who are passionate about the outdoors become effective climate advocates.

A: Eco Waterproof Softshell Vest, B: tentree Sweatpants, C: tentree Cloud Packable Puffer Jacket, D: 5.5" x 8.5" Cactus Leather Bound Journal, E: Wheat Straw & Bamboo Wireless Earbuds, F: FEED Organic Cotton Market Tote

A: Recycled Heathered Adjustable Belt Bag, B: Graphite Pickleball Set, C: Ladies Recycled Performance Short Sleeve T-shirt, D: Skullcandy Push Active Wireless Earbuds



A



B

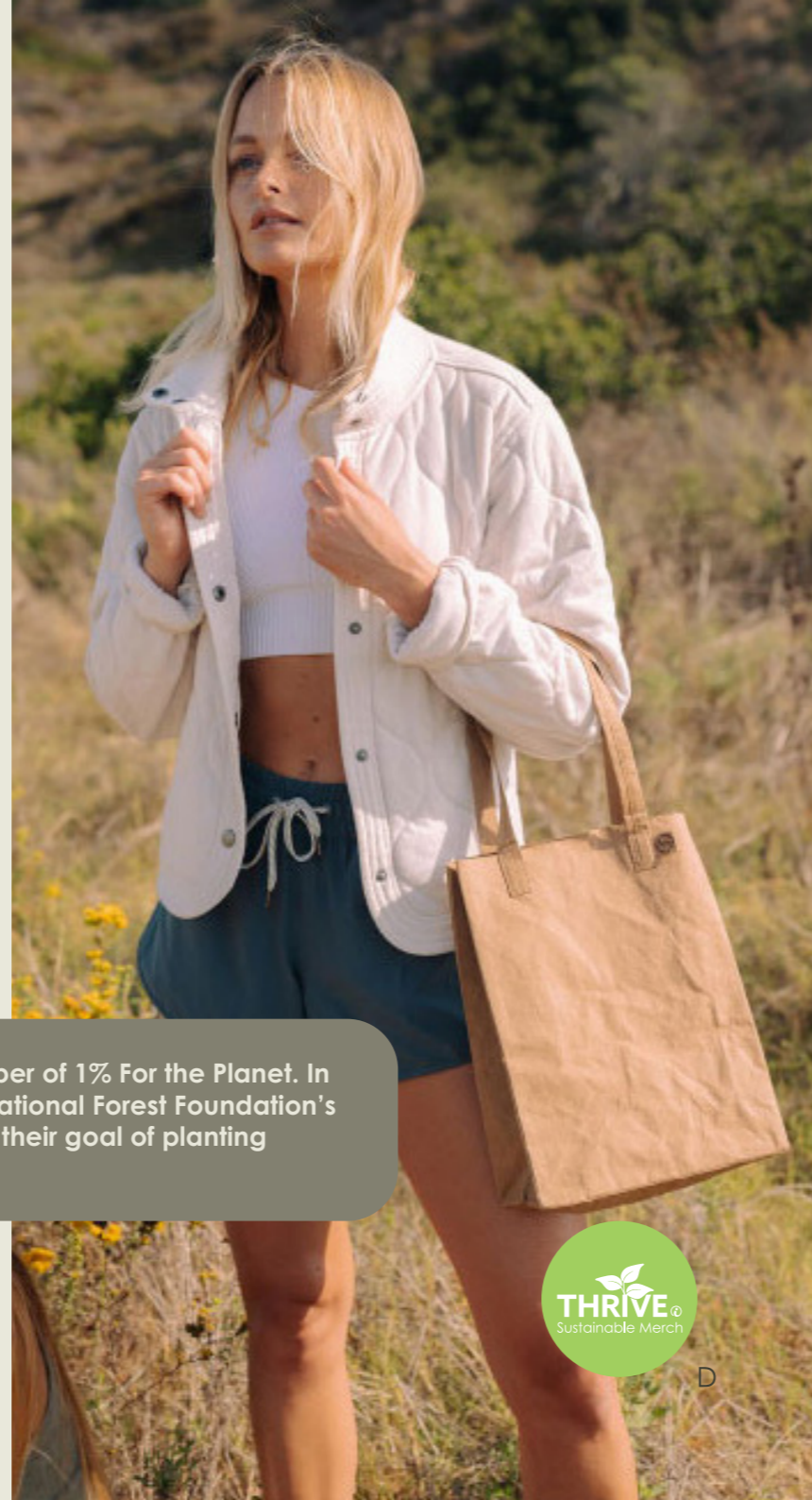
A: Nike Dri-FIT Recycled Quarter Zip, B: Anker® Soundcore Life Q20i Wireless Noise Cancelling Headphone, C: Miir® 32oz All Day Camp Cup, D: Out of the Woods Supernatural Paper Mini Market Tote



C



Out of the Woods is a member of 1% For the Planet. In 2023 they donated to the National Forest Foundation's Sapling Program to support their goal of planting 50,000,000 trees by 2025.



D



A



B



C

Every FEED product provides school meals to children. Since 2007, FEED has helped provide over 126 million school meals, working with three partners and in over 20 countries – that translates to over \$14 million in support.



D



E



A: RPET Felt & Bamboo Pencil Kit with Phone Stand, B: Bamboo Click Pen, C: Stormtech Pure Earth Oasis Polo, D: Wireless Microphone Set, E: FEED Organic Cotton Shopper Tote



Stormtech is turning discarded plastics from landfills and oceans into quality apparel. They are fine-tuning their production processes to use less water and chemicals as well as packaging their merch in biodegradable bags.



A: Stormtech Pure Earth Explorer Hat, B: Recycled Insulated Outdoor Blanket, C: Allmade® Women's Relaxed Tri-Blend Scoop Neck Tee, D: 17oz Texture Bottom Two Color Ceramic Mug



B



C



D



A

A: Desk Organizer, B: 6" x 9" Pineapple Fiber Notebook, C: TOPO Designs Classic Recycled Computer Backpack, D: Self-Cleaning LARQ 25oz Stainless Vacuum Insulated Bottle

LARQ partners with charity : water to bring clean water to communities worldwide. This supplier partner also supports nature-based solutions that restore the planet through planting projects, revitalizing habitats through a partnership with veritree.



B



C



D



Sun Bum's non-profit organization is tackling skin cancer awareness in children. They provide playground shade structures, sun safety education and sunscreen to children who live and play in the sun.



A



C



D



B

A: SUN BUM® Travel Kit, B: Out of The Woods® Seagull XL Cooler, C: Bamboo Wireless Charger and Speaker, D: Modern Sprout® Seed Bomb



A: Recycled Aluminum Soft Touch Gel Pen, B: 5.5" x 8.5" FSC® Recycled Seed Paper Bound Journal, C: uni-ball® Jetstream Recycled Ocean Plastic Pen, D: The North Face® Ladies Glacier Full-Zip Fleece Jacket



A



Through their Renewed program, The North Face is keeping unwanted gear from landfills. Taking in old unwanted gear in exchange for a gift card and refurbish your old favorites to be resold for a new life on the trails. If they can't repair it, it's recycled or donated creating less waste to fill landfills.



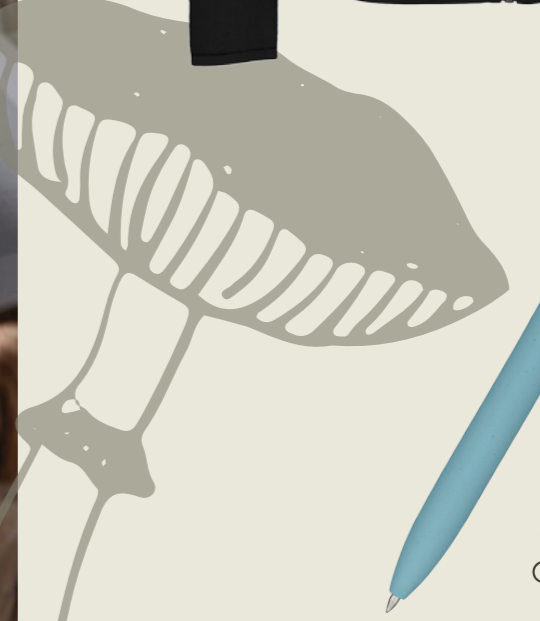
D



B



C



Branded Merch that does more.

**1** ORDER =  
**TREE**

At Image Source we plant a  
tree with every order.